

RECEIVED AND PROCESSED BY LAND DEVELOPMENT INITIALS
MAR 08 2017



PLAN VIEW
HORIZONTAL SCALE: 1 : 250

- NOTES:**
- 600 INSTALL 804F FDH ON CONCRETE PAD WITH 2x BOLLARS, SEE DETAIL 'C' SHEET 500
 - 601 STUB 2-100mm DUCTS 0.6m ABOVE FINISHED GRADE
 - 602 INSTALL (2) 100mm DBII PVC CONDUIT L= 17.0 m, SEE DETAIL 'B' SHEET 500
 - 603 CORE FOR 2-100mm CONDUIT IN TELUS MH-128 SEE DETAIL 'A' SHEET 500
 - 604 NEW 90° BEND 2-100mm DBII PVC CONDUIT
 - ~~605 NEW 45° BEND 2-100mm DBII PVC CONDUIT~~



45540 STEVENSON RD
FDH - SITE PLAN
N.T.S.

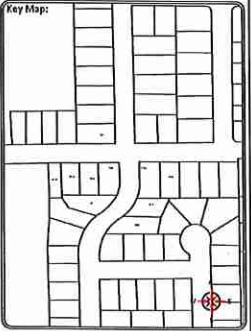
CAUTION: GAS FACILITIES IN AREA LOCATE AND EXPOSE PRIOR TO COMMENCING WORK

METHOD OF PLACEMENT VIA OPEN TRENCH UNLESS OTHERWISE NOTED

LOCATE AND PROTECT ALL OTHER UTILITIES IN FIELD

ALL MEASUREMENTS ARE IN METERS UNLESS NOTED

Sheet Title:
Design
Function:
Make ready Task:
FDH Placement



DO ONE CALL
CALL BEFORE YOU DIG
1-800-474-4744
OR BY CELLULAR 604
UNOCALLER AREA 877-8648
CALL AT LEAST TWO FULL BUSINESS DAYS BEFORE YOU PLAN TO DIG

Client:
TELUS

Prepared By:
FAFL
SUITE 200 - 7485 130 ST
Surrey BC V3W 1H8

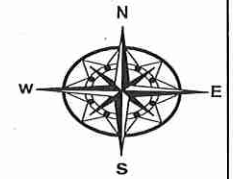
Rev	Date	Notes	QC
-	-	-	-
-	-	-	-
-	-	-	-
-	-	-	-
IFC: MARCH 8TH 2017			
IFP: March 3-2017			
DRAWN BY:		SHORI YAGISHITA	
DESIGNED BY:		KADTEC SYSTEMS	

Proprietary Information
Not for disclosure except under written agreement

Scale = 1:250
0 2.5 5.0 7.5 10.0

Project:
Falcon 2017
SRDS 1011A - 2626658
Sardis, BC

File Name:
C0ID
SRDS Route: 1011A
Network Number
2626658 Sheet Number
600

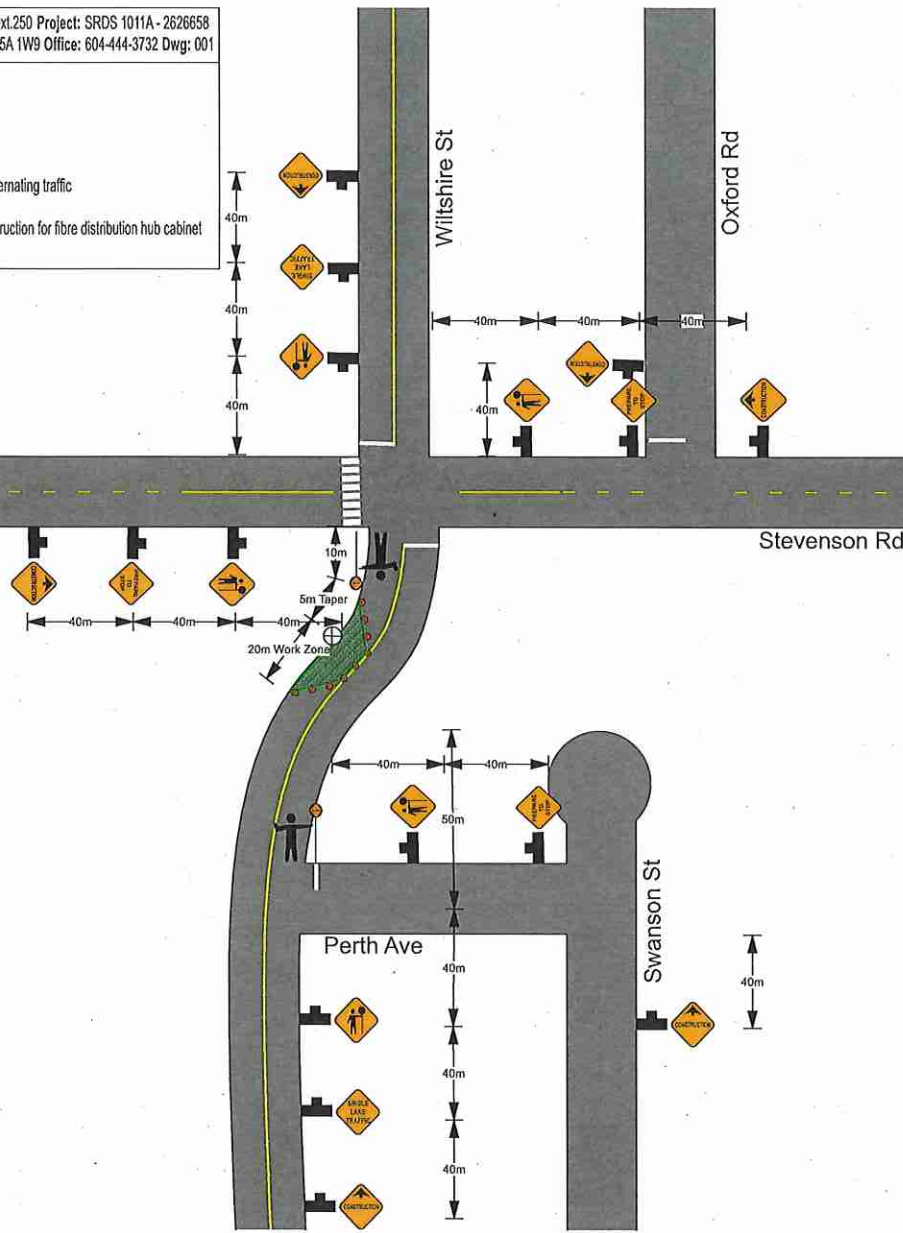


Date: May 15, 2017 Author: Katrina Seymour 604-444-3732 ext.250 Project: SRDS 1011A - 2626658
 Universal Flagging: 170-8061 Lougheed Hwy, Burnaby, BC V5A 1W9 Office: 604-444-3732 Dwg: 001

Comments:
 AFL / Telus
 Kelly Buchanan 250-485-7330

City of Chilliwack
 Job location: Stevenson Rd and Wiltshire St
 Closure description: South bound lane closure - Single lane alternating traffic
 Tentative date and hours: May 29 - June 7, 2017
 Job description: Civil construction - New conduit and pad construction for fibre distribution hub cabinet

Advanced Warning Sign distances may be shortened due to Urban block length



Legend

- Bollard
- Work Area
- Sign Stand
- Flagger Ahead C-001-1
- Prepare to Stop C-029
- Construction AHEAD ARROW C-018-1A
- Single Lane Traffic C-030-8
- flagger